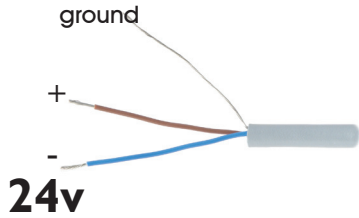
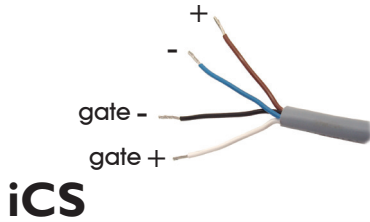
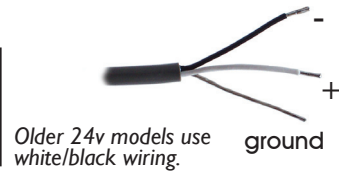


Ai Power Connection Options



12 & 24 Volt lights are built with flying leads and have load limiting resistors for use with any regulated 24 volt DC power source.

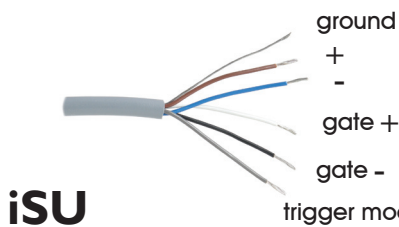


Inline Current Source built into the power cable.



Requires 24v power source

[click for wiring info](#)



Strobe Control built into the power cable.



Requires 24v power source

[click for wiring info](#)



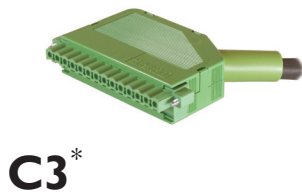
Available only with 24v, iCS, and iSU wiring

[click for M12 pinout](#)



For Use With:
CS100, CS100-IC,
CS300, CS300-IC,
CS410, CS420,
MS210, MS220
S4000, S6000, S6000-AS

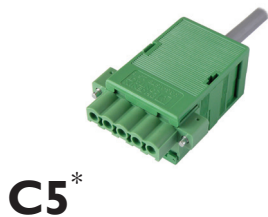
[click for C2 pinout](#)



For Use With:
Pulsar 710



[click to view manual](#)



For Use With:
Pulsar 320



[click to view manual](#)

Standard cable length: 1.5 Meter (59")

*REMOVING THE CONNECTOR VOIDS Ai's WARRANTY

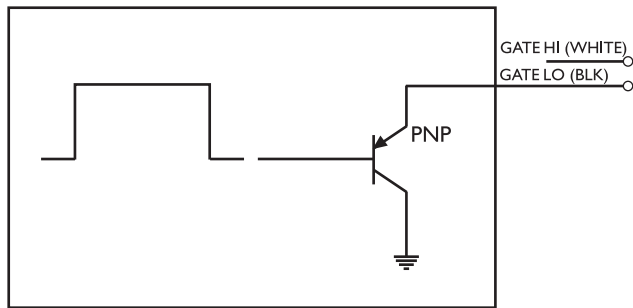
ICS SPECIFICATIONS

Parameter	Specification
Input Voltage Range	+21 to 30 volts dc (24V nom)
Maximum Input Current	2.0 A
Gating Control Active High (GHI) and Active Low	GHI Turn On Voltage = 4.2v / Input Tolerant to -10 to +24 vdc Analog 0-10V: White 0V =0%, 10V=100%. Note: Can also be used as an active LOW gate input
Gating Time	30µs +/- 10µs
Storage Temperature	-40 to +125C
Operating Temperature	0 to +70C
Housing Material	High Impact Polycarbonate
Weight	Approx 1.7 oz (cable not included)
Size	Approx 3.74L x 0.76W x 0.76H (in.) <i>Wash Down Version</i> Approx 5.06L x 0.76W x 0.76H (in.)

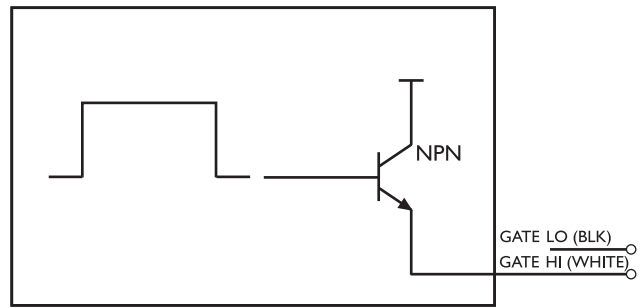
ICS PINOUT

COLOR	FUNCTION
BROWN	Vin (+)
BLUE	GND (-)
WHITE	CTRL
BLACK	GATE
GRAY	Chassis GND

ICS CONNECTION DIAGRAM



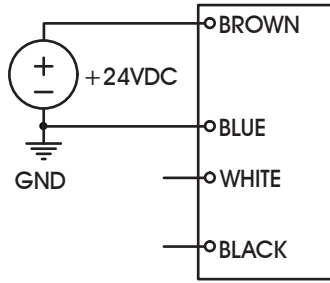
PNP -- Sinking Output



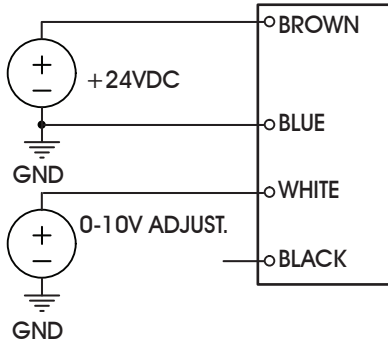
NPN -- Sourcing Output

iCS WIRING DIAGRAMS

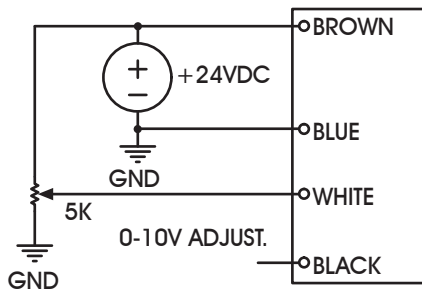
STANDARD OPERATION
LIGHT IS ALWAYS ON



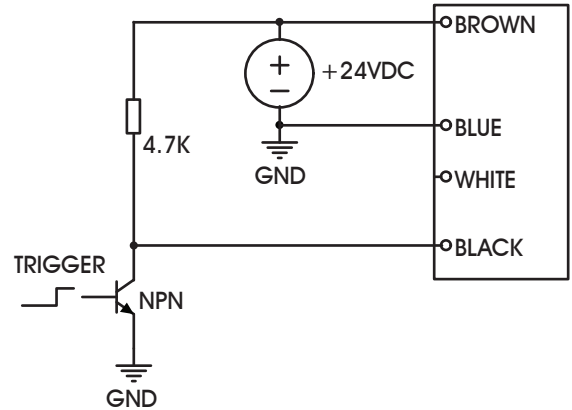
0-10V ANALOG CONTROL
LINEAR OUTPUT ADJUST



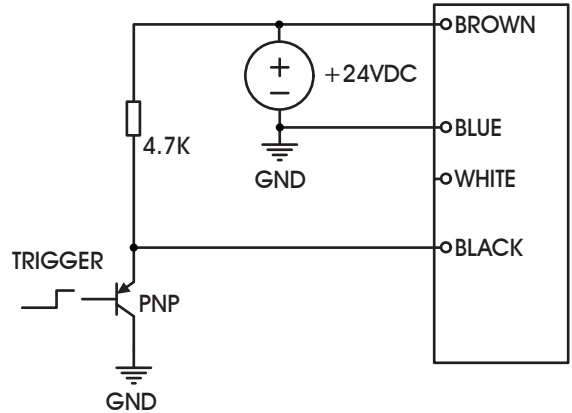
0-10V ANALOG CONTROL
LINEAR OUTPUT ADJUST WITH EXTERNAL POTENTIOMETER



ACTIVE LOW GATE
LOW TRIGGER SHUTS LIGHT OFF



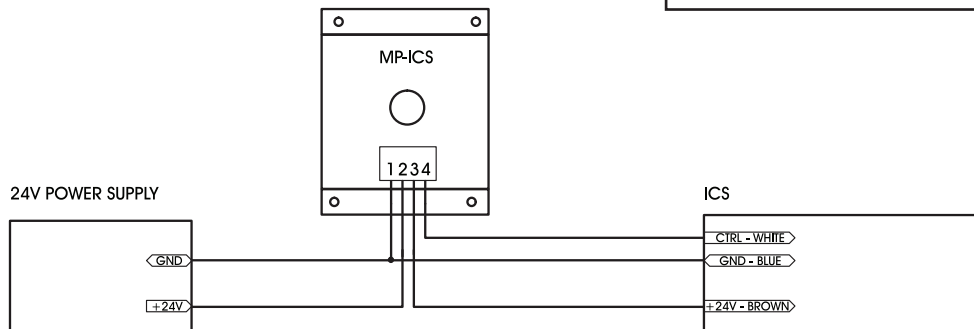
ACTIVE HIGH GATE
HIGH TRIGGER SHUTS LIGHT OFF



Wiring Diagram for Optional Manual Intensity Control

[click to view MP-iCS Spec Sheet](#)

Note: The MP-iCS is compatible only with lights built with the IC wiring option after 3/1/2012. It cannot be used with 24v lights, or the iCS 1.0



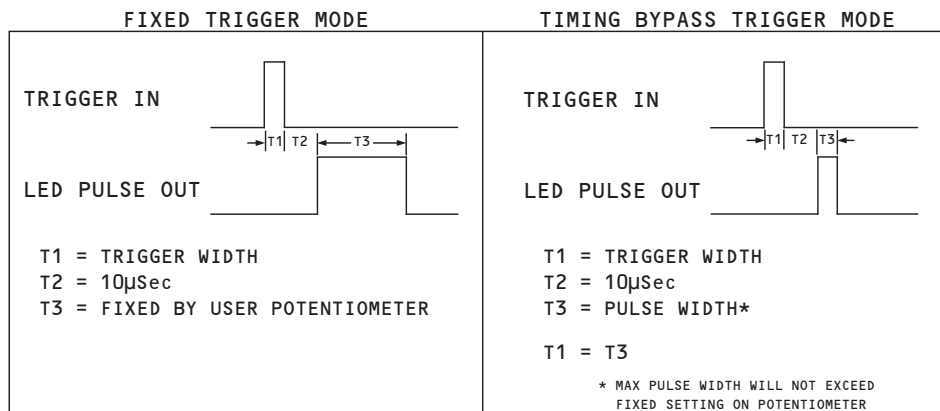
ISU SPECIFICATIONS

Parameter	Specification	Notes
Input Voltage Range	+18 to 30VDC	24V nominal
Strobe output	0 - 12A*	* Pulse-width/Light head dependent
Max. Repetition Rate	100 Hz **	** Light head dependent
Current Output Adj.	Min to Max Current adj. as established by factory setting	Maximum current set assuming 300µSec operation
Max. Input Current	1.1A	Approx 100mA local
Trigger Active HI: WHITE Active LO: BLACK	Active HI: WHITE Active LO: BLACK	TTL compatible, 30VDC tolerant
Mode Select	Select wire that is used to put the unit into Standard or Bypass triggering mode	- Pulled 0 for bypass - Unconnected for standard
Mechanical & Environmental		
Power Indicator	Red LED is used to indicate power is being supplied	
Storage Temperature	-40 to +125C	
Operating Temperature	0 to +70C	
Housing Material	High Impact Polycarbonate	
Weight	Approx 1.7 oz	Cable Not Included
Size	Approx 4.55L x 0.67W x 0.70H	Inches

ISU PINOUT

BROWN	VIN +
BLUE	VIN -
WHITE	Active high trigger input
BLACK	Active low trigger input
GRAY	Trigger Mode Select: Connect to 0V to enable timing bypass. Leave floating for fixed trigger mode

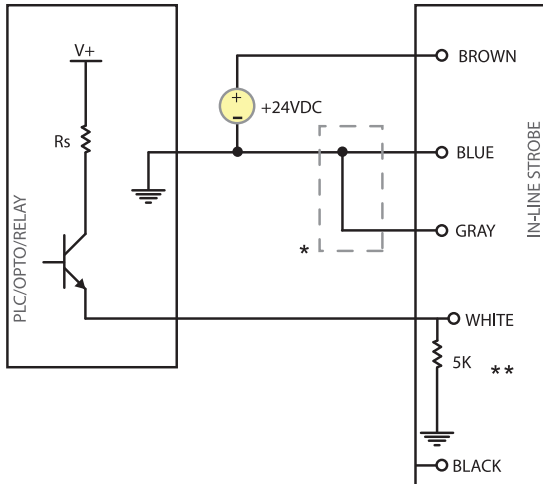
ISU TRIGGER MODES



ISU WIRING

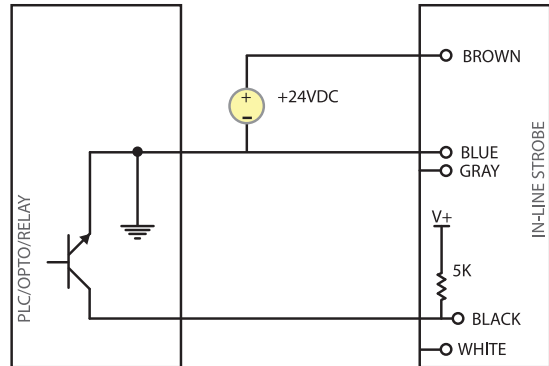
Sourcing Output
Triggered When White is High

NPN Sourcing

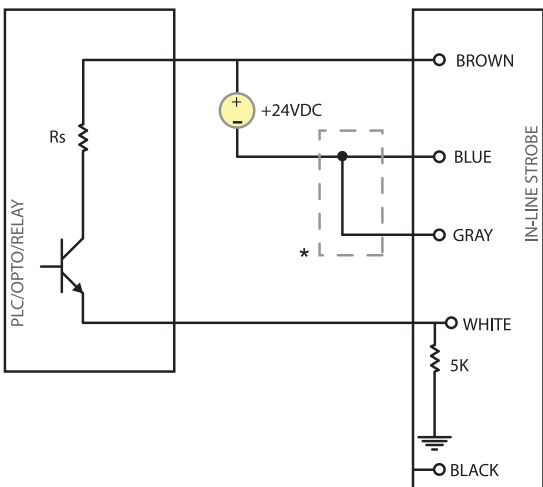


Sinking Output
Triggered When Black is Low

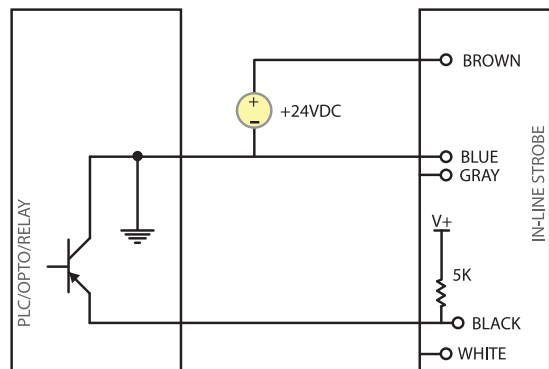
NPN Sinking



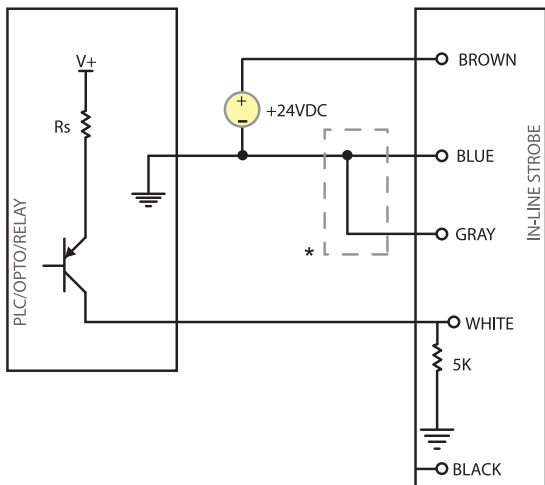
NPN Sourcing - Common (V+)



PNP Sinking



PNP Sourcing



IMPORTANT NOTES:

- FOR BEST RESULTS, AVOID RUNNING THE CABLE NEAR HIGH NOISE ENVIRONMENTS
- THE TRIGGER SOURCE AND ISU MUST SHARE A COMMON GROUND FOR REPEATABLE LIGHTING
- TIE THE BARE DRAIN WIRE OF THE ISU TO A CHASSIS GROUND OR EARTH GROUND; IF ONE IS NOT AVAILABLE, TIE TO -24V

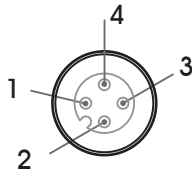
* OPTIONAL: TIE GRAY TO -24V (BLUE) FOR TIMING BYPASS SELECTION; OUTPUT PULSE WIDTH WILL MATCH THE INPUT TRIGGER WIDTH

** ALL RESISTORS SHOWN ARE INTERNAL TO THE ISU. NO EXTERNAL RESISTORS ARE NEEDED

M12 Connector Pin-Out

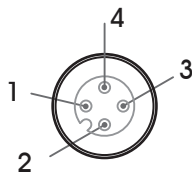
Male end view. Ai lights are built with the male connector standard.

24 Volt
4 Pin



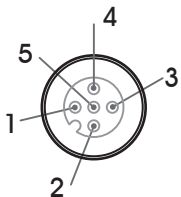
PIN	COLOR	DESC.
1	BROWN	+24V IN
2	WHITE	Not Used
3	BLUE	-24V IN
4	BLACK	Not Used

ICS
4 Pin



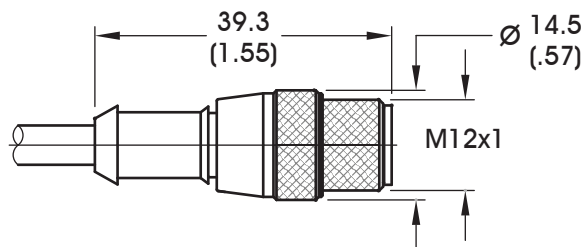
PIN	COLOR	DESC.
1	BROWN	+24V IN
2	WHITE	GHI
3	BLUE	-24V IN
4	BLACK	GLO

ISU
5 Pin



PIN	COLOR	DESC.
1	BROWN	+24V IN
2	WHITE	TRIGGER IN, ACTIVE HIGH
3	BLUE	-24V IN
4	BLACK	TRIGGER IN, ACTIVE LO
5	GRAY	TRIGGER MODE SELECT

Dimensional Information



C2 Connector Pin-out
Male - Solder Side

